

LIBERCOURT

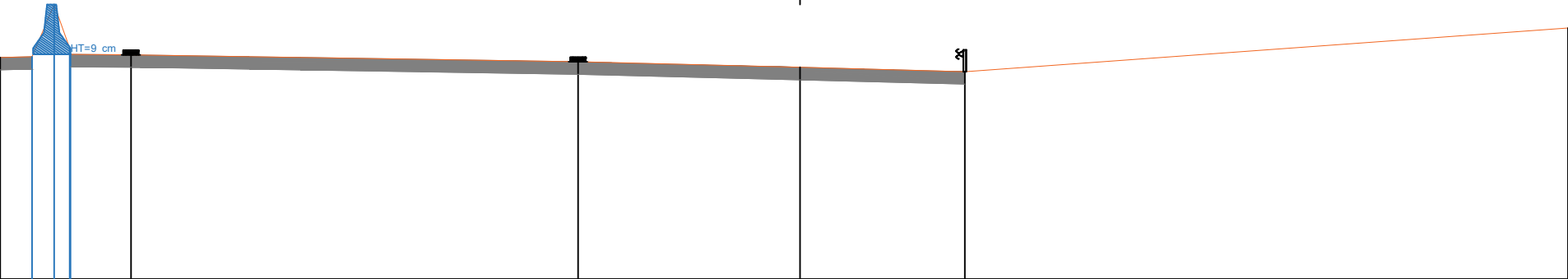
Autoroute A1

Sens Paris -> Lille

Profil P286

indice: 1

Sens Paris -> Lille



Echelle des longueurs : 1/100  
Echelle des altitudes : 1/100

PC : 21.00 m

Altitudes TN	24.56	24.57	25.41	24.61	24.60	24.49	24.40	24.33	25.03
Distances à l'axe TN	-12.863	-12.353	-11.995	-11.737	-10.763	-3.573	0.000	2.647	12.348
Distances partielles TN	0.510	0.358	0.259	0.974	7.190	3.573	2.647	9.701	